

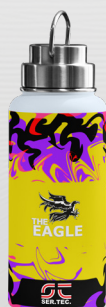


EAGLE R360 2P

UV LED printer designed for direct printing
onto cylindrical and conical objects



VIDEO



EAGLE R360 2P

The EAGLE R360 2P is a dual-station UV LED printer designed for the direct customisation of cylindrical and conical objects, making it perfect for industrial and promotional applications

- **Direct printing on cylindrical and conical objects (up to 12°):** Ideal for bottles, flasks, cans, cosmetic bottles and glasses
- **Compatibility with various materials:** Prints on glass, paper, plastic and metal
- **Two printing stations:** Increases operational efficiency, allowing for optimised production times and ensuring a continuous, uninterrupted workflow
- **Semi-automatically adjustable height with Laser Gap:** Ensures quick and reliable setup, simplifying daily operations and improving overall print quality

KEY FEATURES



- **Continuous workflow with reduced downtime**
- **Simple and intuitive touchscreen interface**
- **Wide compatibility with diameters from 45 to 150 mm**
- **Ideal for cosmetics, beverages, merchandising and packaging**
- **Can be integrated with automation systems**

INK

UV LED inks: Designed to deliver high-quality prints on a wide range of materials, these inks are weather-resistant, feature vibrant colours and offer excellent white coverage for transparent or dark materials. The semi-flexible inks allow printing on both rigid and flexible surfaces, including plastics and leather. The recirculation system prevents sedimentation and reduces maintenance costs.

Thanks to **UV LED** technology, which does not require heat to dry the ink, it is also possible to print on heat-sensitive materials:

- Plastic, ceramics, paper, metals and many other materials
- Coloured or transparent materials using white ink
- Colour-white-colour for double-sided images on glass or other transparent materials
- Cylindrical or conical objects
- 3D, Braille or foil effects
- Rigid or flexible substrates



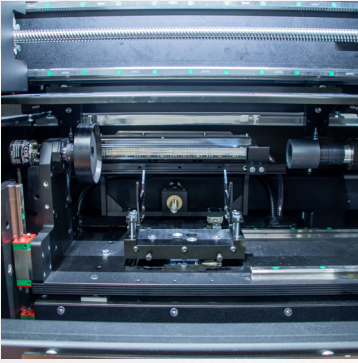
Monitor touch screen

Printing station

TECHNICAL SPECIFICATIONS

Maximum resolution	14400 dpi
Maximum width	200mm
Print heads	Up to 3 Ricoh Gen 5 print heads
Print speed	16-second cycle
Available colours	CMYK, White + Glossy (Optional)
Diameter	45-150mm
Ink	UV
Interface	Ethernet
Consumption	2 Kw - 8A
Power supply	AC 240V 50/60Hz
Operating environment	20-25° Umidità relativa 15-20%
Optional	<ul style="list-style-type: none"> • Glossy ink • Customisation • Integration with automation systems • Customisable length

OPTIONAL



Length

Customised configuration to perfectly suit your production requirements



Gloss

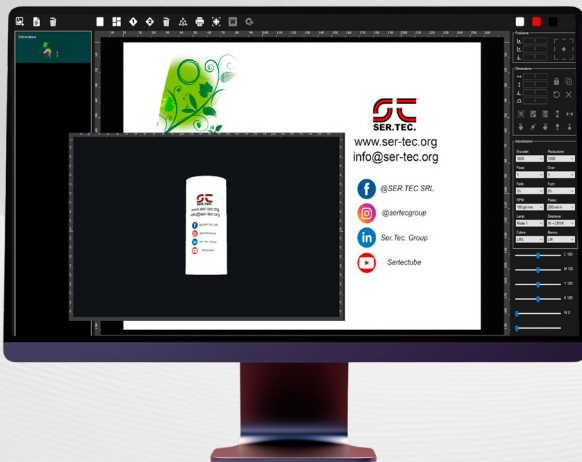
A glossy finish for a premium look and greater visual impact



Integration

Advanced automation thanks to compatibility with robotic systems, boosting efficiency and productivity

SOFTWARE



The **Eagle R360 2P** is equipped with **EagleRIP** software, designed to maximise productivity and precision in industrial printing

- **White underprint optimisation:** Automatic and optimised generation of white underprint for dark or transparent materials
- **Advanced colour management:** Support for custom colour profiles, spot channels and variable data management
- **3D preview:** Check the positioning of graphics in a three-dimensional preview before RIP processing

Thanks to its intuitive interface and the ability to send jobs directly from the print queue, the software simplifies process management, optimising time and resources



Resolution
Max. 14400 DPI



Diameter
from 45
to 150 mm





System Ink
UV LED



Can be integrated with automated systems



 Ser.Tec.Srl
Via Emilio Salgari 14/E
31056 Roncade (TV)

 +39 422798493

 ser-tec.org

 sales@ser-tec.org

